



USER MANUAL FOR LOADING RAMPS

MPL10 200

© 2022 TVH EQUIPMENT N.V.

This document is the original user manual.

All rights and changes reserved. All trademarks mentioned are the property of their respective owners.
No part of this publication may be reproduced and/or published by means of printing, photocopying, microfilm,
or any other means whatsoever without prior written permission of TVH Equipment N.V.

TVH Equipment N.V.
Brabantstraat 15
8790 Waregem

Tel. +32 56 43 42 11
info@tvhequipment.com

www.tvhequipment.com

Version: 1
Date: 22/04/2022

Introduction

When you have unloaded your new mobile ramp, make sure that no damage has occurred in shipping and that the ramp is complete. The ramp is designed for loading trucks and containers with a forklift. Please read the manual carefully before your using. Use ramps only according to manual and your local instructions about safe usage of such equipment.

Mobile ramp allows to perform quick and reliable loading operations with a minimum of staff usage. The main advantages of mobile loading ramp Wenron are:

- speed of loading works. Forklift mobile ramp allows a several times reduced time of unloading and loading goods from a semi-trailer truck.
- labour and financial resources saving. To carry out unloading and loading operations there is no need to involve an entire work team anymore- using a mobile ramp, the participation of only one worker is needed.
- safety. The usage and proper mobile ramp exploitation, minimizes risks of any loading operations.

OPERATING INSTRUCTIONS

1. Visually make sure that the ramp is in the correct position for operation and check oil level.
2. Lift the bridge up to the right height, about 60-70 mm above the floor of the vehicle, by using the hydraulic manual pump. For this you should close the valve on the pump and pump up the pressure using the pump handle.
3. Make the ramp and the vehicle body being parallel and carefully adjust the truck backwards. The ramp is safe to perform loading operations when the connection lip goes as deep as possible inside of the vehicle, at least 250 mm.
4. Install wheel chocks under the wheels of the ramp.
5. Open the valve on the pump, wait until the ramp will lower on the body of the truck.
6. Attach safety chains to the truck body and lock through hooks.
7. After loading/ unloading is completed, close pump release valve, raise ramp slightly, unlock safety chains.
8. Now the vehicle is free to go. Also the ramp can be moved with the forklift by using the tow pole (before it you should remove wheel chocks).
9. Slowly open release valve to lower the ramp. Always store the ramp in the lowered position.
10. Remove stoppage brakes under the wheels.

OBSERVE THE FOLLOWING PRECAUTIONS

- Never drive on the ramp when it is on its hydraulic cylinders (when the hydraulic manual pump valve is closed)!
- While the ramp is in a raised position, unless it is resting on chained to a suitably stable and sturdy support, do not crawl or work under the ramp and do not walk or drive on it!
- Never exceed the maximum load!
- Do not move the ramp in the process of lowering/lifting.
- Drive with steady speed, do not make quick brakings.
- Supporting legs of ramp are used only for insuring safety, when truck accidently disconnect with ramp. Usage of ramp which stay only on supporting legs is strictly prohibited!
- Avoid sudden opening of the valve on the pump to avoid a sharp descent that may damage the mechanism. The pressure should gradually take off (maximum descent 4-7 mm/sec).

We use Industrial 20 or Industrial 40 hydraulic oils for our ramps.

TROUBLE SHOOTING

1. Ramp does not raise.

Possible cause	Method to eliminate
Leaking hydraulic pump	Check the valve location, clean it, if there are any contamination on the surface
There is cargo on ramp	Remove cargo
There is air inside hydraulic system	Open tank, add oil, close tank, open cap on pump, wait while air will go out, tight cap back
Valve at the pump is open	Close the valve to lift ramp

2. Lifting speed is too low.

Possible cause	Method to eliminate
The fluid leaks from hoses or cylinders	Replace hoses or cylinders

3. The ramp does not rise to the required height.

Possible cause	Method to eliminate
Low oil level in the tank	Add oil

4. The ramp does not go down.

Possible cause	Method to eliminate
Drain inoperative	Check the valve location, clean it, if there are any contamination on the surface

5. Ramp fall.

Possible cause	Method to eliminate
Leaking hydraulic pump	Check the valve location, clean it, if there are any contamination on the surface
Leaking tank	Weld (close otherwise) flowing hole

Please, don't doubt to call or email supplier. We are always open to help you.

SPARE PARTS



Manual hydraulic pump 25 cm³ with oil tank



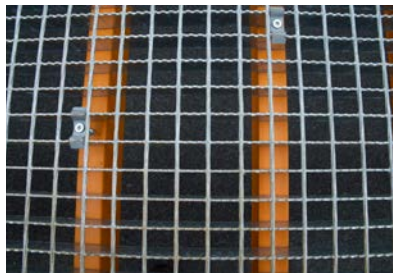
Hydraulic cylinders 2 pcs



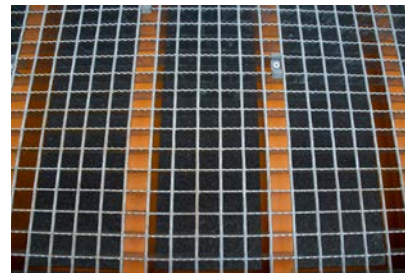
High pressure hoses 3 pcs



Wheels (diameter 250 mm) 4 pcs



Anti-slip galvanized grating 1.5mx1m – 12 pcs



Anti-slip galvanized grating 1.2mx1m – 2 pcs



Chains to fix the ramp with a truck – 2 pcs



Chains to fix tow pole with a forklift – 1 pcs



Wheel chocks – 2 pairs



TVH EQUIPMENT NV · HEAD OFFICE WAREGEM
Brabantstraat 15 · B-8790 Waregem · T +32 56 43 42 11
info@tvhequipment.com · www.tvhequipment.com